

Parameter Estimation in Multi-Dimensional Stochastic Differential Equation Models

A. Sommer¹

Abstract: Many processes – especially biological ones – follow certain basic principles but are influenced by intrinsic stochasticity that may significantly alter the system’s behavior quantitatively but also qualitatively. This can often be adequately modeled by a system of nonlinear stochastic differential equations (SDE):

$$dx = f(t, x, p) dt + D dW_t, \quad t \in [t_0, t_f], \quad x(t_0) = x_0(p) \in \mathbb{R}^{n_x},$$

whose every component might be affected by a diffusion of constant intensity, i.e. D is an n_x -by- n_x diagonal matrix and dW_t denotes an n_x -dimensional white noise process. Both, the *drift* function f and the initial state x_0 may depend on parameters p that are to be estimated from measurements.

On short time scales, such SDE resemble ordinary differential equations (ODE) processes, i.e. the diffusion is not the dominating part of the system. From this observation the idea rises to split the time horizon into multiple intervals, in which only the drift part of the SDE, i.e. the associated ODE, is used for simulating the process. The *jumps* (discontinuities) at the inner grid points may be interpreted as cumulated stochasticity of the preceding interval.

Simply concatenating the interval-wise ODE solutions would mean a complete decoupling of the interval processes and, in general, leads to wrong conclusions. Instead, the jumps are used for regularization in the parameter estimation problem.

The proposed piecewise deterministic approach allows using state-of-the-art ODE solvers and efficient derivative-based optimization methods. It can handle

multi-dimensional systems, equality and inequality constraints on the states and parameters, and poses no structural demands on the measurement data (arbitrary measurement times, direct or indirect, full or partial, exact or noisy). The method can also be used for hidden state or trajectory reconstruction (see Fig. 1). A convergence result and applications to problems in systems biology and finance will be presented.

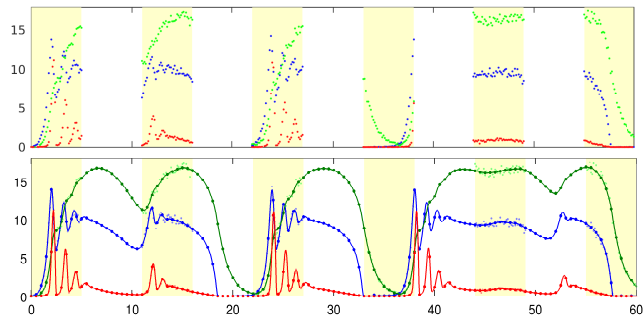


Fig. 1: Calcium oscillator model (a.u.). The observed oscillations are due to intrinsic stochasticity. Top: Intermittent observations with measurement errors. Bottom: Reconstructed trajectory. Enlarged dots mark the beginning of a new approximation interval. The "bump" in the last unobserved time range is a successful reconstruction of the original trajectory.

¹ Interdisciplinary Center for Scientific Computing (IWR), Heidelberg University
Mathematikon, Im Neuenheimer Feld 205, D-69120 Heidelberg, Germany
andreas.sommer@iwr.uni-heidelberg.de